

MARCOTHERM CILINDRO 70/125

Code CILxxxSP07

DESCRIPTION



The MARCOTHERM CILINDRO mounting cylinders are stamped expansion cylinders made of high specific weight EPS, blue in colour with a corrugated external surface. They are available in two different diameters.

Dimensions

- Diameter: 70 / 125 mm
- Useful surface diameter: 50 / 105 mm
- Thickness: 70 mm
- Specific weight: 170 kg/m

Fastening

- Adhesive: MARCOTHERM COLLA PU

APPLICATION

Thanks to the elasticity of rigid foam, the MTH CILINDRO mounting cylinders are especially suitable as supports for the mounting of elements from outside sources without thermal bridge, in Thermal Insulation Composite Systems made of expanded polystyrene (EPS) and mineral wool (MW).

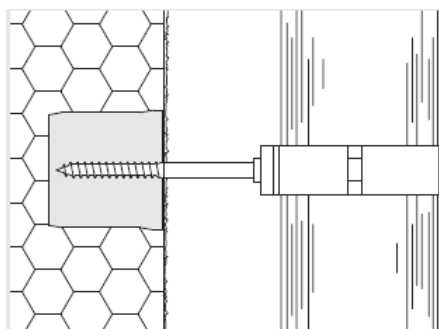
Use only wood screws, self-threading screws or large cylindrical thread screws (i.e. screws for paintings) for fastening to the MTH CILINDRO mounting cylinder.

These cylinders can be used to mount external source elements without thermal bridge, such as hose brackets with wood threading, latches and stops with wood threading, clothes hangers, boxes, shutter stops.

Hose bracket with wood threading

for roof rain gutters.

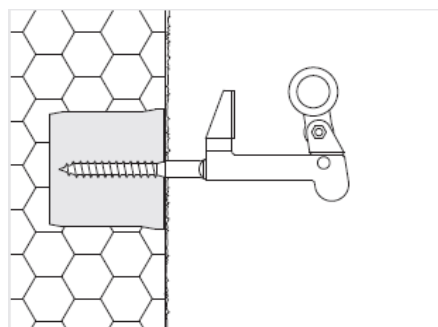
This application is only suitable for surfaces made of EPS



Stops and latches with wood threads

for shutters

This application is only suitable for surfaces made of EPS.



Colorificio San Marco Spa – Via Alta 10 – 30020 Marcon (VE) – Tel +39 041 4569322 – Fax +39 041 5950153 – info@san-marco.it

san marco
SISTEMI VERNICIANTI PER L'EDILIZIA

MARCOTHERM CILINDRO 70/125

Code CILxxxSP07

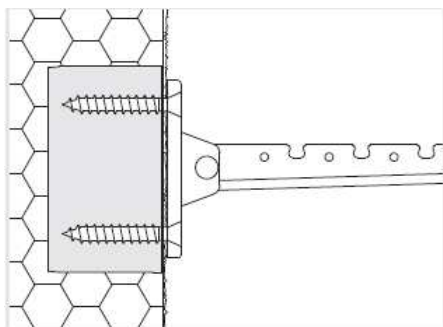
Clothing hangers

Fastened with wood or self-threading screws, as well as with large size (i.e. screws for paintings) and cylindrical thread screws.

Screw diameter: min. 5 mm

Insertion depth: min. 60 mm

This application is only suitable for surfaces made of EPS.



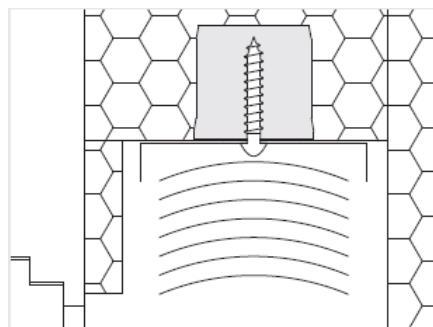
Boxes

Fastened with wood or self-threading screws, as well as with large size (i.e. screws for paintings) and cylindrical thread screws.

Screw diameter: min. 5 mm

Insertion depth: min. 60 mm

This application is only suitable for surfaces made of EPS.



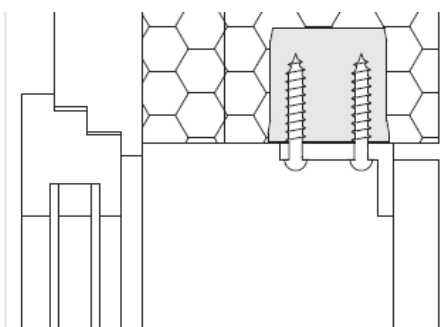
Shutter stops

Fastened with wood or self-threading screws, as well as with large size (i.e. screws for paintings) and cylindrical thread screws.

Screw diameter: min. 5 mm

Insertion depth: min. 60 mm

This application is only suitable for surfaces made of EPS.



TECHICAL INFORMATION

Thermal conductivity certificate: 0.045 W/mK
DIN 4102, May 1998: Class B2 fire rating

(Testing record F.2-270/01 FIW Munich)
(Testing certificate NRH-086/01, FIW Munich)

Colorificio San Marco Spa – Via Alta 10 – 30020 Marcon (VE) – Tel +39 041 4569322 – Fax +39 041 5950153 – info@san-marco.it

**san
marco**
SISTEMI VERNICIANTI PER L'EDILIZIA

MARCOTHERM CILINDRO 70/125

Code CILxxxSP07

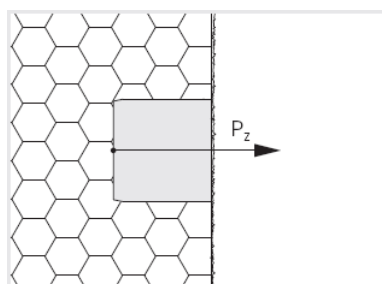
Allowable tensile stress P_z

on perfectly glued Ø 70 mm MTH CILINDRO mounting cylinders in

- 15 kg/m EPS insulation panels: 60 kg
- 120 kg/m MW insulation panels: 15 kg

on perfectly glued Ø 125 mm MTH CILINDRO mounting cylinders in

- 15 kg/m EPS insulation panels: 80 kg
- 120 kg/m MW insulation panels: 15 kg



Allowable shear stress P_Q

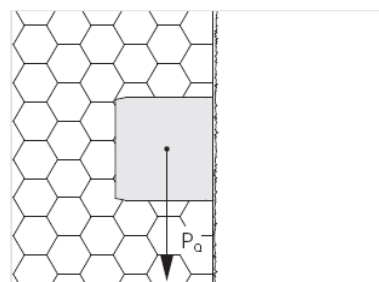
on perfectly glued Ø 70 mm MTH CILINDRO mounting cylinders in

- 15 kg/m EPS insulation panels: 75 kg
- 120 kg/m MW insulation panels: 51 kg

on perfectly glued Ø 125 mm MTH CILINDRO mounting cylinders in

- 15 kg/m EPS insulation panels: 105 kg
- 120 kg/m MW insulation panels: 63 kg

A value of 25 kg/5 cm for the reinforcing fabric was considered in the values seen above.



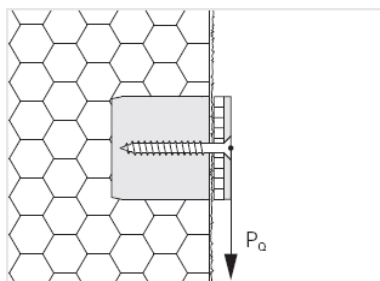
Allowable shear stress P_Q

with intermediate seal for hooking to the base (i.e. plastic or sealant material)

- Stress per screw Ø 70 mm: 80 kg
- Stress per screw Ø 125 mm: 107 kg

The values are based on a screw diameter of: 7 mm / Insertion depth: 60 mm

A value of 25 kg/5 cm for the reinforcing fabric was considered in the values seen above.



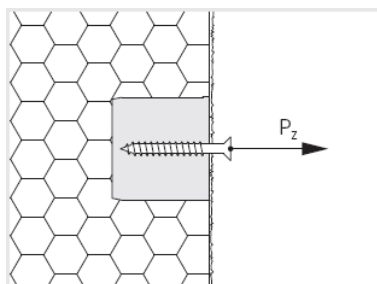
Allowable tensile stress P_z

on the fastening screws/bolts

- Stress per screw: 60 kg

The values are based on:

- Screw diameter: 7 mm
- Insertion depth: 60 mm



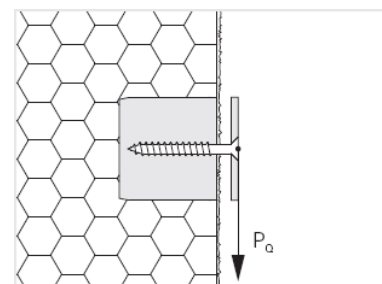
Allowable shear stress P_Q

without intermediate hooking seal

- Stress per screw: 15 kg

The values are based on:

- Screw diameter: 7 mm
- Insertion depth: 60 mm



MARCOTHERM CILINDRO 70/125

Code CILxxxSP07

MOUNTING

The surfaces of the insulation panels must have undergone the necessary smoothing steps before installation of the MTH CILINDRO mounting cylinder.

Any size differences with respect to the diagram must be clarified by the customer.

Determine the exact position and report it on the construction drawing as a reference for the mounting of other elements from outside sources.

Using the countersinking tool for the MTH CILINDRO mounting cylinders or a general tool for mounting cylinders, mill a conical hole in the insulation panel and clean up the dust when finished.

Before using the MTH CILINDRO mounting cylinder countersinking tool, press the end of the guide into the face, letting it project 20 mm.



Apply MTH COLLA PU to the milled surface of the panel and spread with a putty knife.



Apply MTH COLLA PU onto the internal round surface of the MTH CILINDRO mounting cylinder.

Adhesive required for each MTH CILINDRO mounting cylinder.

Ø 70 mm: 16 – 20 ml

Ø 125 mm: 30 – 38 ml



Press the MTH CILINDRO mounting cylinder into the milled hole in the insulation panel until it is flush. The blue colour provides for easy checking of all the MTH CILINDRO mounting cylinders.



Colorificio San Marco Spa – Via Alta 10 – 30020 Marcon (VE) – Tel +39 041 4569322 – Fax +39 041 5950153 – info@san-marco.it

san marco
SISTEMI VERNICIANTI PER L'EDILIZIA

MARCOTHERM CILINDRO 70/125

Code CILxxxSP07

FINISHING WORK

Mounting elements from outside sources are mounted on the plaster coat.

Fastening must only be done with wood or self-threading screws, as well as with large size (i.e. screws for paintings) and cylindrical thread screws. Metric and self-tapping screws are not recommended.

Determine the exact position of the MTH CILINDRO mounting cylinders by tapping on the plaster coat.

The screws can be inserted easier by making a hole in the cylinder using a punch. Drilling a starter hole is not necessary.

Screw the object to be mounted into the MTH CILINDRO mounting cylinder.



COLORIFICIO SAN MARCO guarantees that the information herein is provided to the best of its technical and scientific knowledge and based on its experience; nonetheless, the company may not be held liable for the results obtained using these products, as application conditions are beyond its control. It is recommended to always make sure that the product is suited to each specific instance. The present sheet voids and replaces any previously existing sheets. For further technical information call the technical service +39 041 4569322.

Colorificio San Marco Spa – Via Alta 10 – 30020 Marcon (VE) – Tel +39 041 4569322 – Fax +39 041 5950153 – info@san-marco.it

**san
marco**
SISTEMI VERNICIANTI PER L'EDILIZIA